

ZERO-MAX[®] Phas-Lok Adjusting Hubs



**DISTRIBUIDOR
AUTORIZADO**

MEX (55) 53 63 23 31
QRO (442) 1 95 72 60

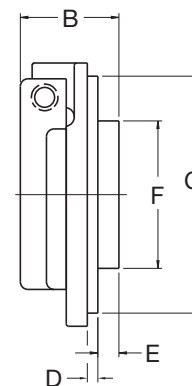
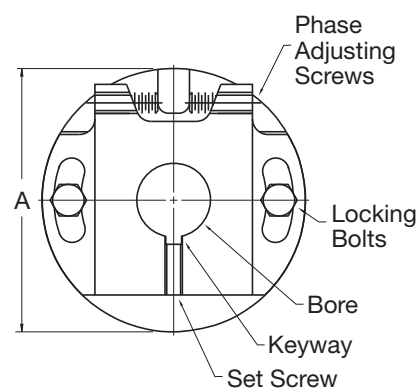
MTY (81) 83 54 10 18
ventas@industrialmagza.com

Phas-Lok Adjusting Hubs Provide Easy and Accurate Phase Adjustment

The Phas-Lok Adjusting Hub is an economical, yet precision device. It provides an easy way to change the phase relationship of a drive component and the shaft. It is ideal for fine tuning timing adjustments, adjusting for chain elongation, and sprocket tooth wear. The Zero-Max Phas-Lok provides an accurate, mechanical adjustment within a 24 degree range ($\pm 12^\circ$).



Standard Series - bored to shaft size		
Size A Max bore 7/8" or 22mm	Size B Max bore 1 1/2" or 38mm	Size C Max bore 2 1/2" or 65mm
Blank bore models available.		
Phas-Lok for the Browning Bushing		
AX Use with Browning "G" Bushing	BX Use with Browning "H" Bushing	CX Use with Browning "Q1" Bushing
Phas-Lok for the standard QD Bushings		
N/A	B-QD Use with QD series "JA" Bushing	C-QD Use with QD series "SD" Bushing



Physical Dimensions									
	A	B	C	D	E	F	G	H	Weight
Series A	2 7/8	1 1/2	2 7/16	3/16	5/16	1 1/4	2 1/8 Dia. B/C	(3) 1/4-20 x 1/2	1.4 lbs.
Series B	3 3/4	1 23/32	3 5/16	3/16	1/2	2 1/8	2 7/8 Dia. B/C	(3) 3/8-16 x 1/2	2.3 lbs.
Series C	6 1/4	2 1/4	5 5/8	1/4	1/2	3 1/2	4 3/8 Dia. B/C	(3) 1/2-13 x 3/4	11.2 lbs.

Minimum Sprocket Size (# Teeth)										
Chain	25	35	41	40	50	60	80	100	120	
Series A	35	25	19	20	16	14	12	10	9	
Series B	52	32	24	24	21	18	14	12	11	
Series C	84	54	39	40	32	27	25	20	18	

